

# *Tapley Memorial Hall*



## **A CHARMING HISTORIC MUSEUM**

*A unique setting for showers, concerts, lectures, cocktail receptions, holiday parties and other special events.*



Located in downtown Danvers, Tapley Memorial Hall features a 1,000 square foot event space with cathedral ceilings and a stage.

Tapley Memorial Hall, built in 1930, houses the Society's large and varied local history collections. These collections are diverse and contain some remarkable artifacts.

# Catering

We have a list of caterers that you may select from, or you may provide your own catering. Our experienced event staff will work with you and your caterer to ensure that your event is a great success.

## Event Space

The hall provides a unique historic museum setting for small dinners up to 65 guests or lectures up to 100 attendees. The following tables and chairs are included:

6 - 5' banquet tables                      4-30" hi-tops  
8 - 48" round dinner tables            8-36" round tables  
75 Gold ballroom chairs



## Rental Rates

Rental of Tapley Memorial Hall is \$100 per hour with a 3 hour minimum.

*A property of the  
Danvers Historical Society*

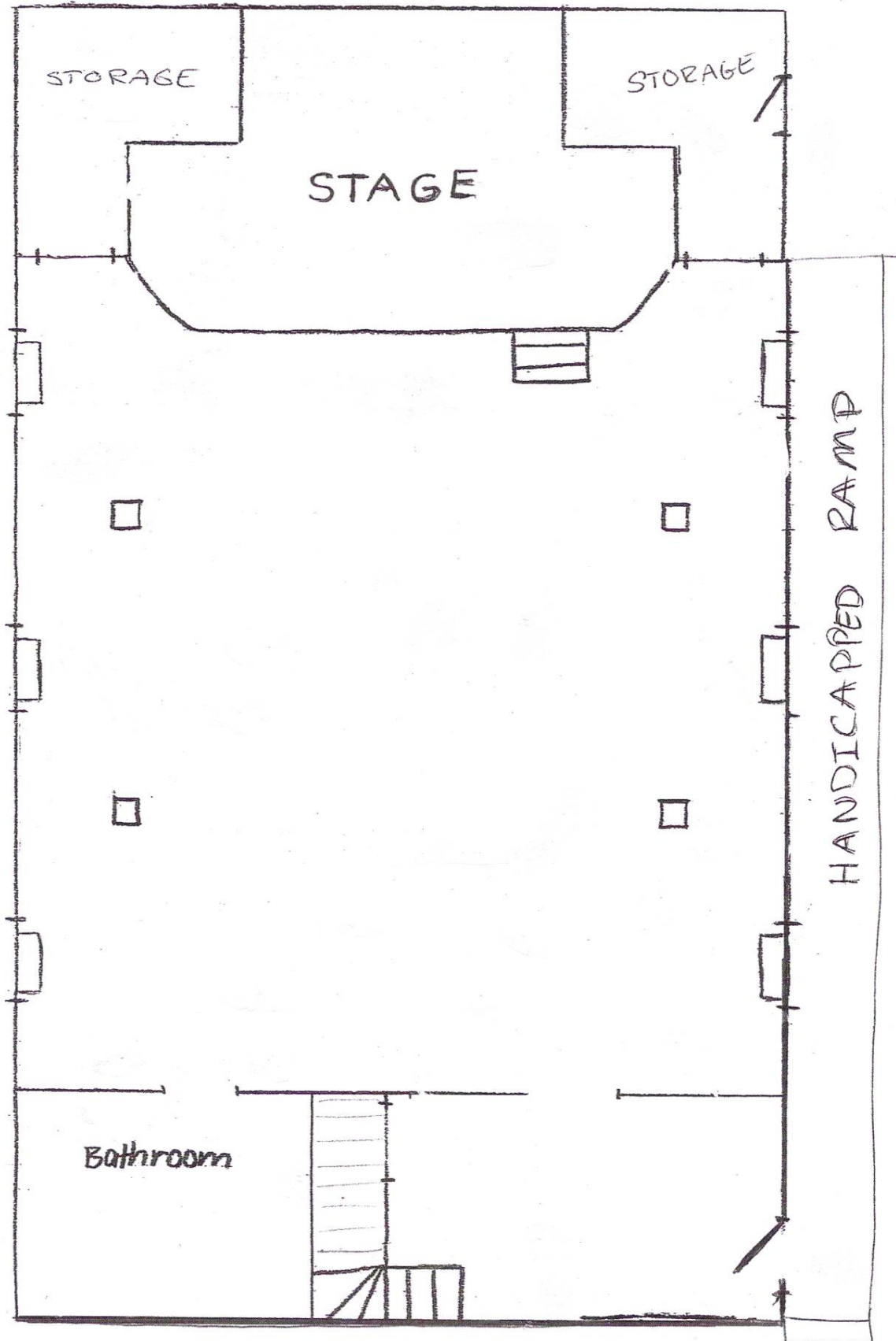
13 Page Street - P.O. Box 381  
Danvers, Massachusetts 01923

Telephone: 978-777-1666  
Email: [dhs@danvershistory.org](mailto:dhs@danvershistory.org)  
[www.danvershistory.org](http://www.danvershistory.org)

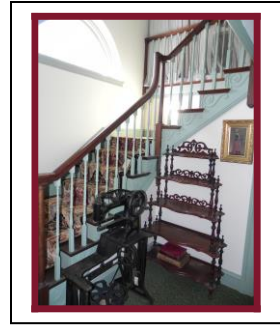
# Tapley Memorial Hall

A property of the Danvers Historical Society

## FLOOR PLAN



# Directions to Tapley Memorial Hall



## From Boston:

Route 93 to Route 95 / 128 North to Exit 23 (Rte. 35).  
Follow High Street (Rte. 35 North) follow approx 1/2 mile then take a left onto Elm Street. Then take your first right onto Page Street.

## From Northern New England:

Routes 89, 93 to 128 North.

Continue with above directions.

Routes 95 and 1 South Take Exit for Rte 62 East. Follow 2 miles to a right hand turn onto Maple Street. Go through town to the 2nd traffic light and take a right onto Elm Street. Page Street is the first street on the right.

**Parking:** Limited parking is available in our lot behind Tapley Memorial Hall and on Page Street. Additional parking is available in the community lot on the corner of Page and Elm Streets.

